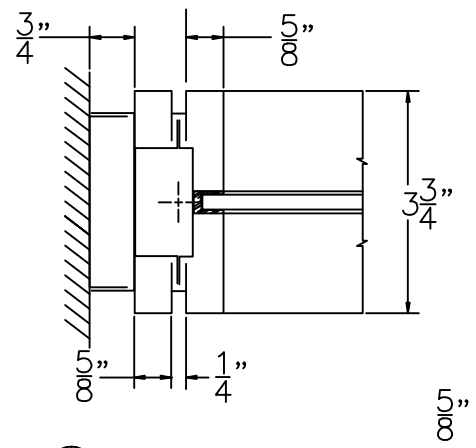
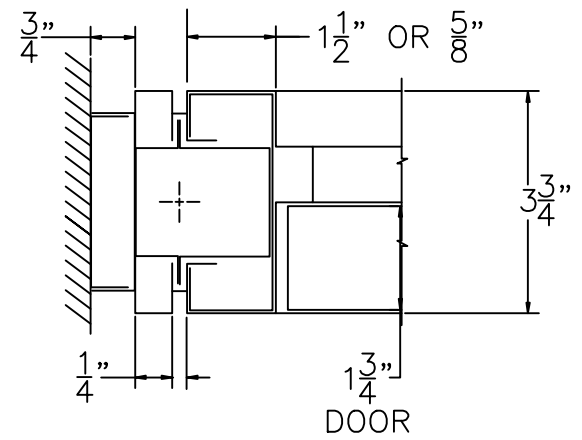


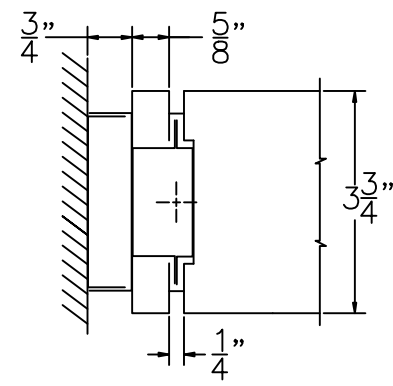
① WALL CONDITION



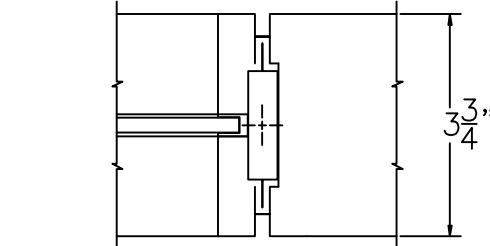
② FULL POST WALL CONDITION AT GLASS PANEL



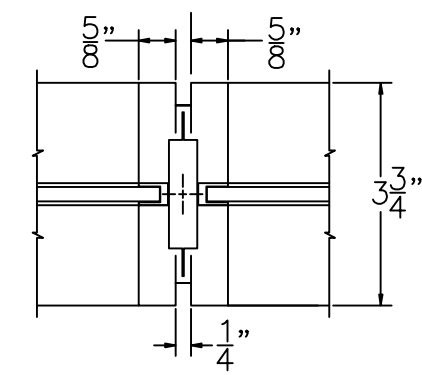
③ FULL POST WALL CONDITION AT DOOR FRAME



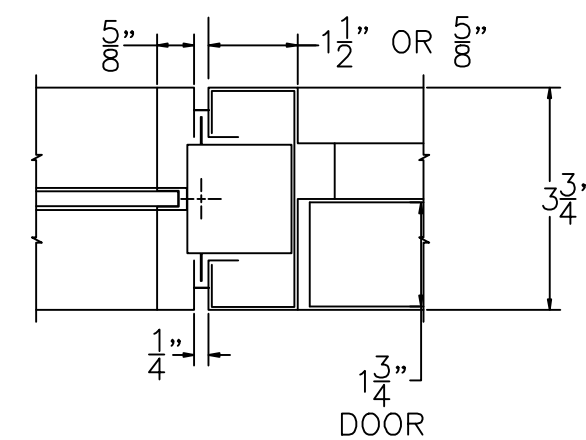
④ FULL POST WALL CONDITION AT SOLID PANEL



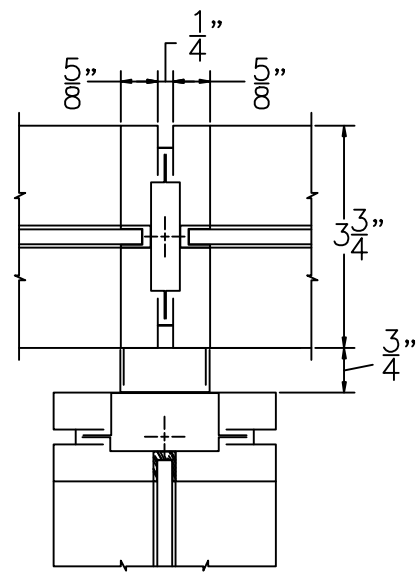
⑤ POST AT GLASS AND STEEL PANEL



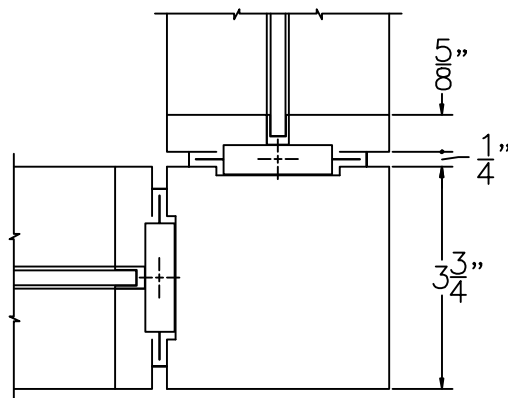
⑤A POST AT GLASS AND GLASS PANEL



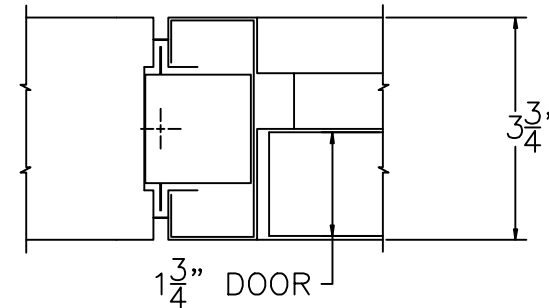
⑥ DOOR FRAME AT GLASS PANEL



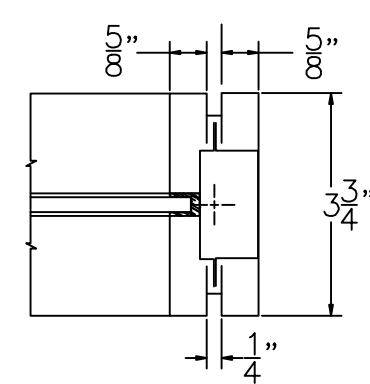
⑦ TEE CONDITION (TYPICAL)



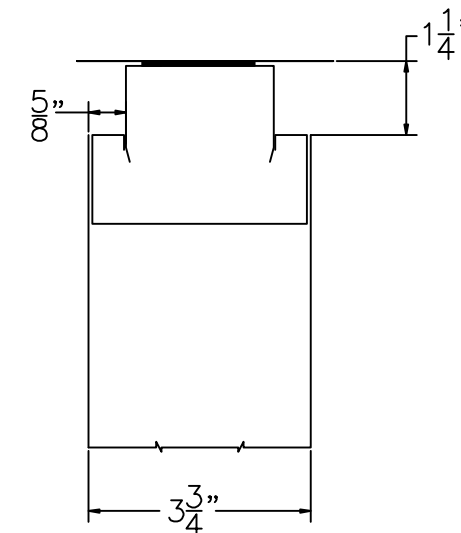
⑧ CORNER CONDITION (TYPICAL)



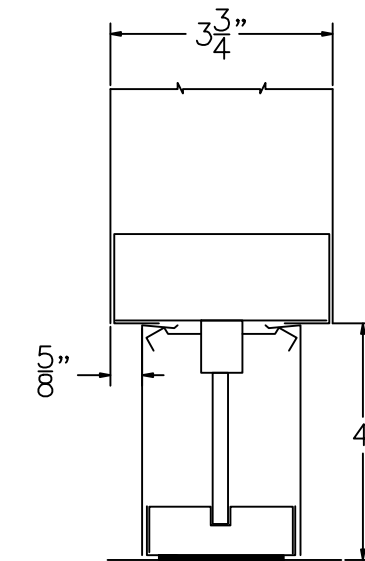
⑨ DOOR FRAME AT SOLID PANEL



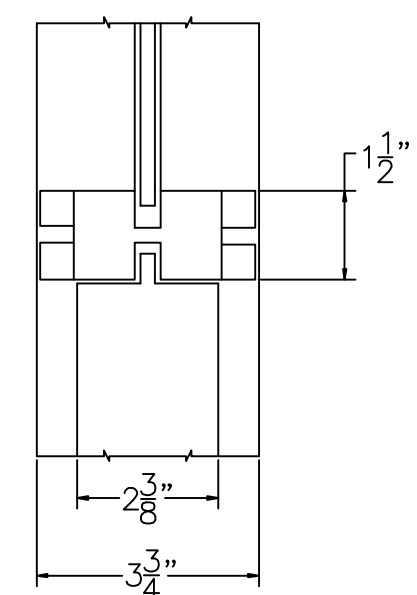
⑩ FINISHED END (TYPICAL)



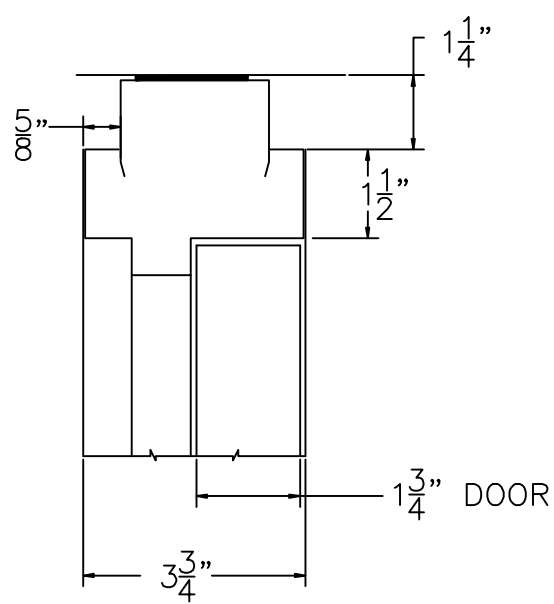
⑪ CEILING CONDITION AT SOLID PANEL



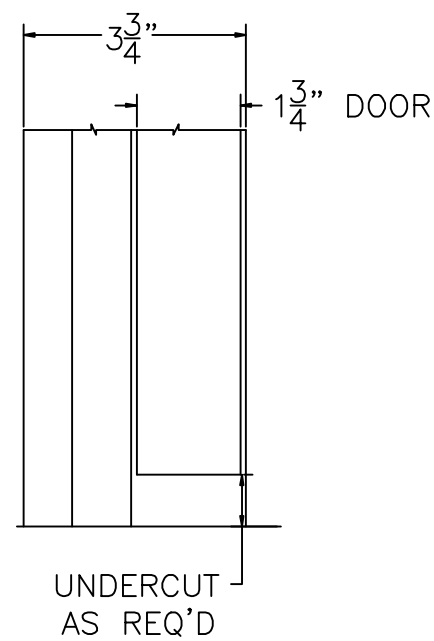
⑫ BASE CONDITION AT SOLID PANEL



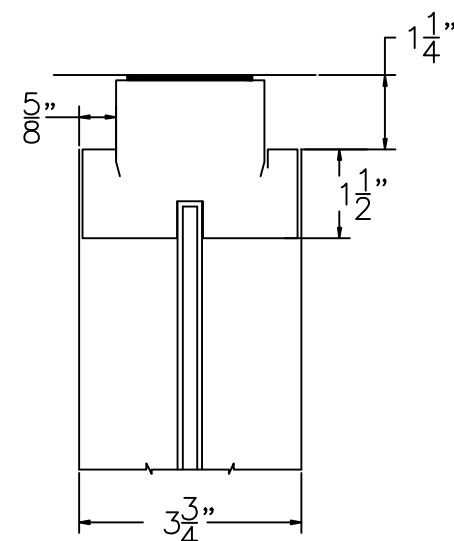
⑬ GLASS AND STEEL PANEL



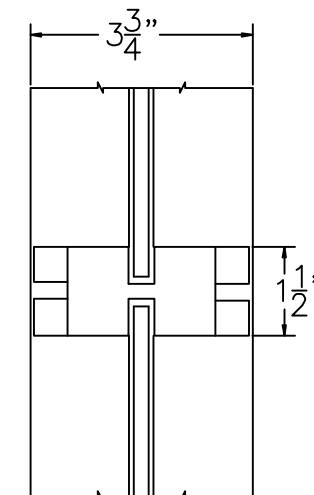
⑭ CEILING CONDITION AT DOOR FRAME



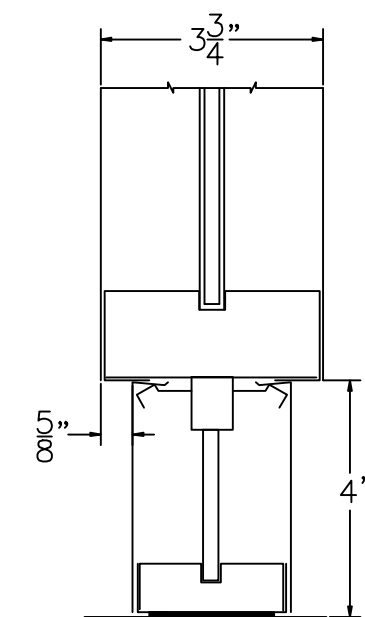
⑮ BASE CONDITION AT DOOR FRAME



⑯ CEILING CONDITION



⑰ INTERMEDIATE RAIL CONDITION



⑱ BASE CONDITION AT GLASS PANEL

construction manager:

architect:

NO.	DATE

**SUPERIOR**  
Steel Door & Trim Co., Inc.  
154 Fairmount Avenue  
Jamestown, New York 14702  
tel.: 716.665.3256  
fax: 716.665.3230

CONSTRUCTION DOCUMENT

375  
SERIES

PARTITION  
DETAILS &  
SECTIONS

SCALE: **NONE**  
DATE: \_\_\_\_\_  
PROJ. NO.: \_\_\_\_\_  
NO. \_\_\_\_\_

3001